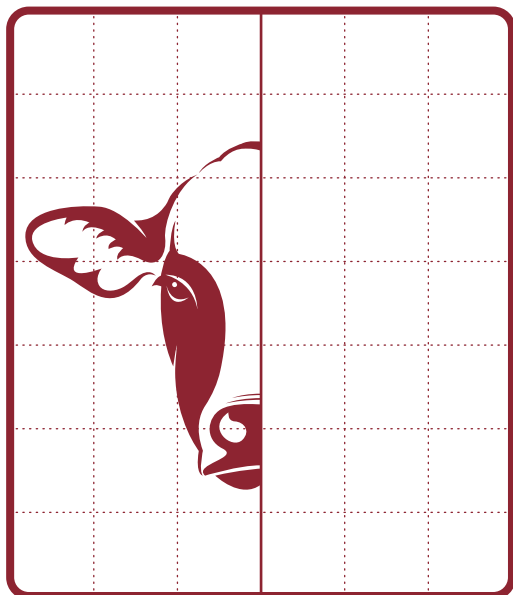


Can you find the
5 pizza toppings?

C H E E S E V R M
H S Q A D G B L U
P E P P E R B R S
L V E A S F L T H
K S K C K S W G R
H A M D N C M W O
O G D E G K M D O
U D F K F L N M M
S W E E T C O R N

mushroom • ham • cheese • sweetcorn • pepper

Can you draw
the other side of
the cow?



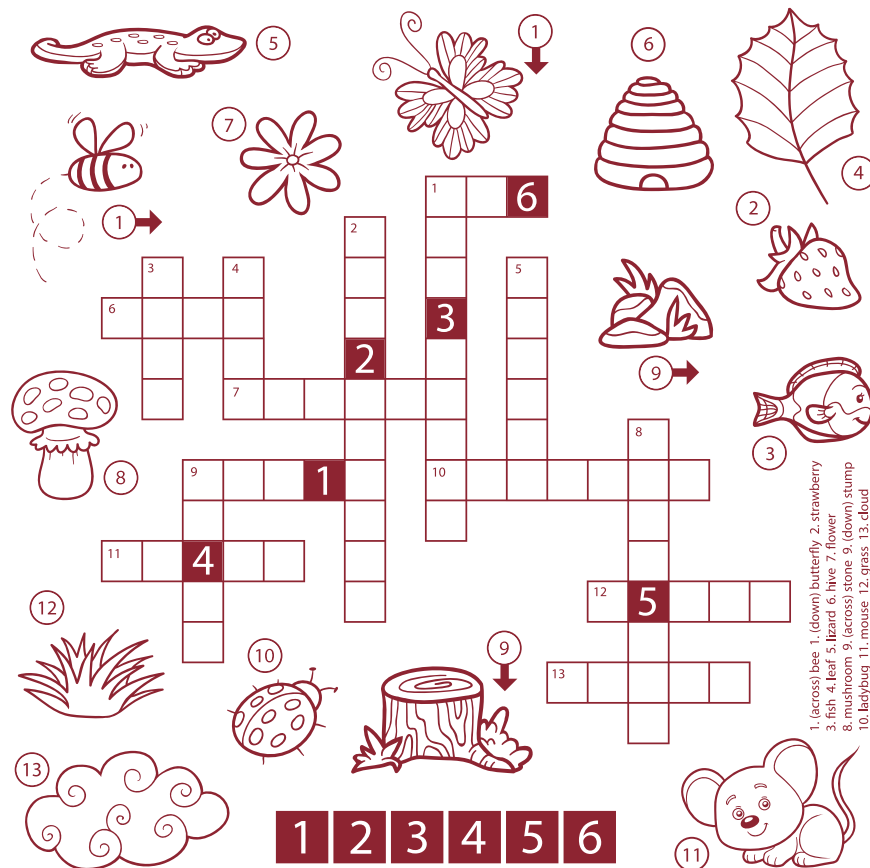
Maths Game!

Can you use your brain
to work out these sums?

$$8 \bigcirc 2 \bigcirc 4 = 6 \quad 8 \bigcirc 5 \bigcirc 4 = 7$$

$$7 \bigcirc 1 \bigcirc 3 = 9 \quad 6 \bigcirc 6 \bigcirc 4 = 8$$

$$3 \bigcirc 4 \bigcirc 5 = 12 \quad 9 \bigcirc 5 \bigcirc 3 = 7$$



LIGHTHORSEMAN

CHILDREN'S MENU

All £5.95

Soft shell tacos with fries

with your choice of:
chicken tinga
chilli beef
plant based beef v

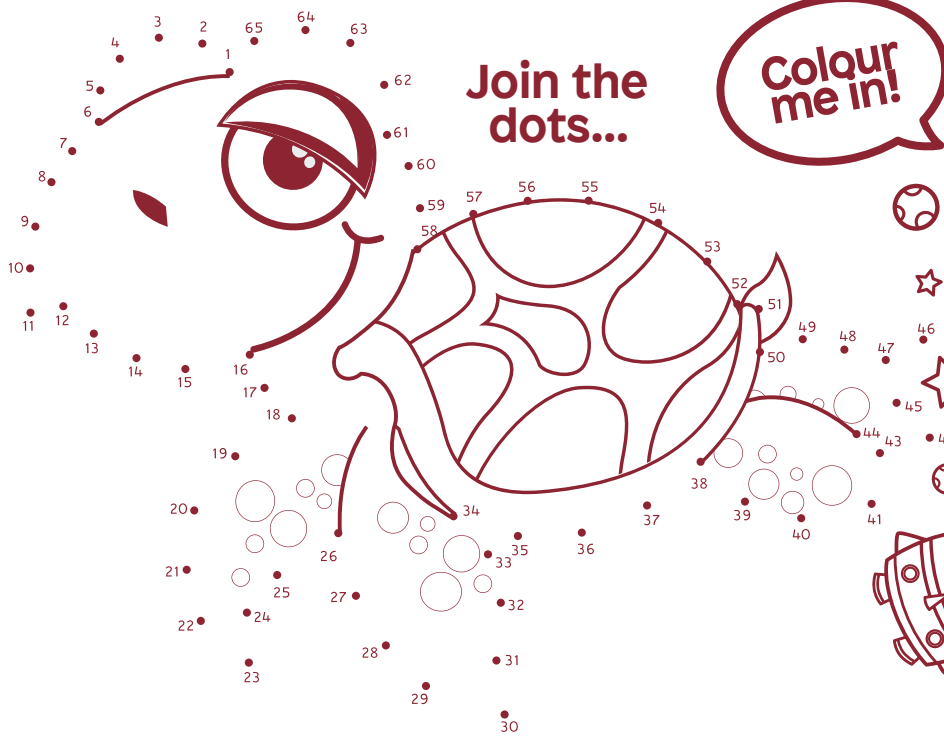
Sausage, egg and fries

Tomato pasta v

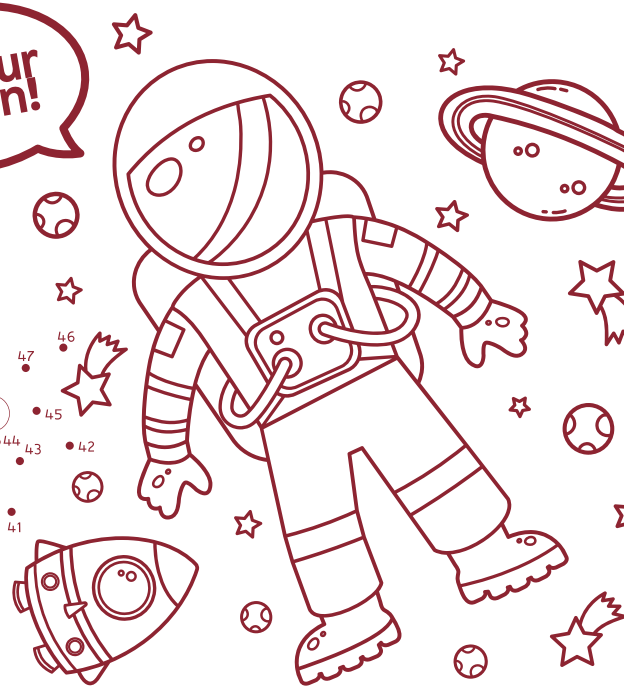
Macaroni cheese v

Quesadilla and fries

with your choice of:
cheese v
chicken tinga



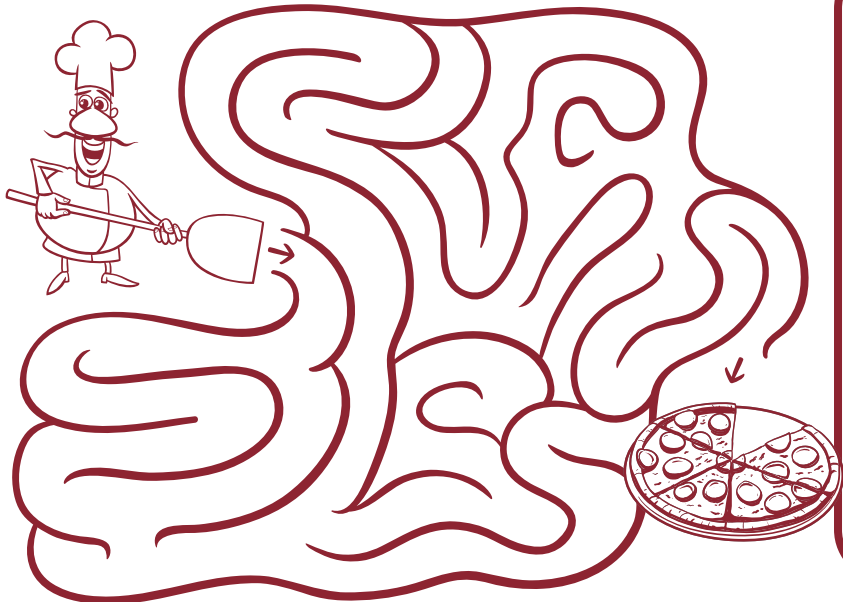
Colour me in!



Can you spot the 12 differences?



Can you help chef get the pizza out of the oven?



Can you finish the picture?

